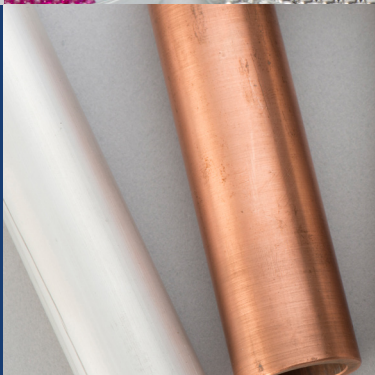
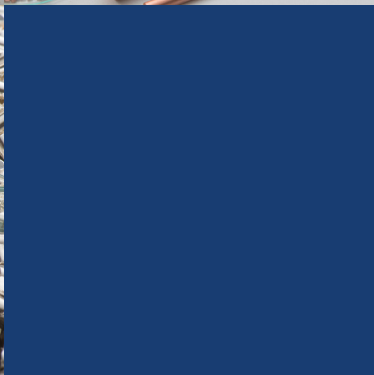
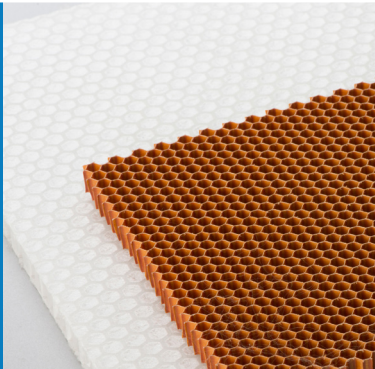
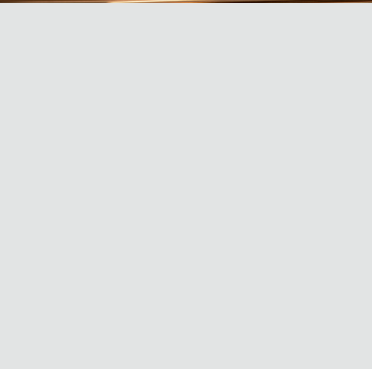


# *GoodFellow50*

Celebrating 50 years of facilitating scientific innovation



SCIN™

**designjunction**

21 - 24 September 2017

The background is a vibrant cosmic scene with a gradient from deep blue at the bottom to orange and yellow at the top. It is filled with numerous small, bright stars and streaks of light, suggesting a nebula or a distant galaxy. Overlaid on this background are several large, faint, white-outlined hexagons of varying sizes, some of which are partially cut off by the edges of the frame. The overall effect is one of a futuristic or scientific aesthetic.

***Goodfellow***

**OXIDIZED  
COBALT**



THE  
**Goodfellow**  
ADVANTAGE

**50  
Years**

of facilitating  
scientific  
innovation

Leading global supplier of  
metals, alloys, ceramics,  
glasses, polymers,  
compounds, composites



Most Subject To  
**Free Delivery**  
within 48 hours

An extensive range of  
**70,000**  
Catalogue Products

An In-house team of  
**scientists  
& engineers**  
with extensive  
knowledge



All of our products are  
underpinned by the  
most rigorous quality  
accreditations

**6,000**  
**Customers**  
**supported**  
**worldwide**



We offer a  
range of  
**bespoke  
processing  
services**



No minimum  
order quantity  
Order any quantity  
you require

# GOODFELLOW AROUND THE WORLD

## USA

Goodfellow Corporation

[info@goodfellowusa.com](mailto:info@goodfellowusa.com)

[www.goodfellowusa.com](http://www.goodfellowusa.com)

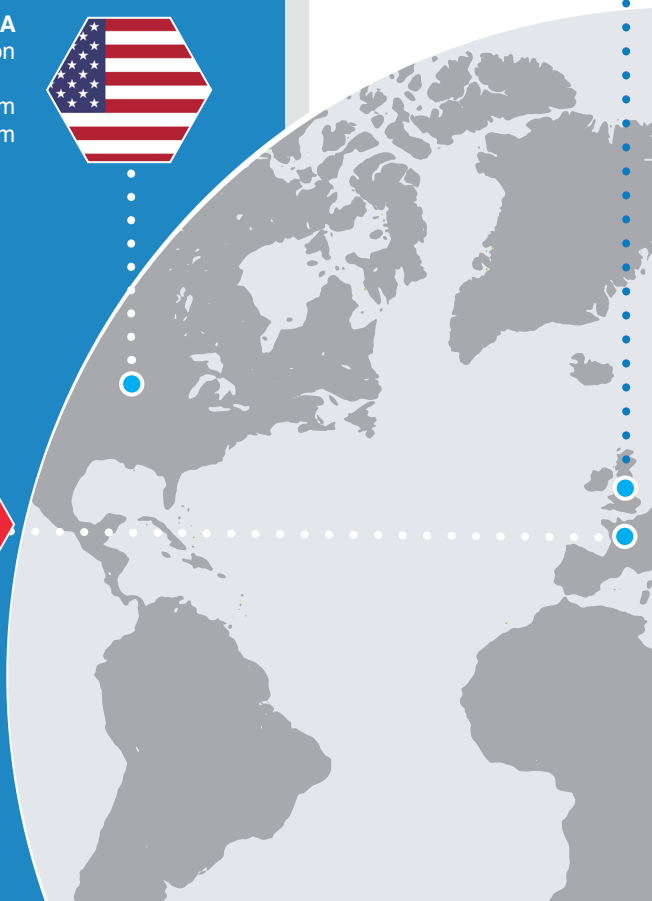


## FRANCE

Goodfellow SARL

[france@goodfellow.com](mailto:france@goodfellow.com)

[www.goodfellow.fr](http://www.goodfellow.fr)





## HEAD OFFICE

Goodfellow Cambridge Limited  
Ermine Business Park  
Huntingdon, PE29 6WR  
England

[info@goodfellow.com](mailto:info@goodfellow.com)  
[www.goodfellow.com](http://www.goodfellow.com)



## GERMANY

Goodfellow GmbH

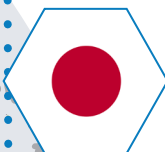
[info@goodfellow.com](mailto:info@goodfellow.com)  
[www.goodfellow.com](http://www.goodfellow.com)



## THE PEOPLE'S REPUBLIC OF CHINA

Goodfellow (Shanghai) Trading  
Co., Ltd.

[china@goodfellow.com](mailto:china@goodfellow.com)  
[www.goodfellow.cn](http://www.goodfellow.cn)



## JAPAN

Goodfellow Cambridge Limited  
c/o Intralink Japan

[info-jp@goodfellow.com](mailto:info-jp@goodfellow.com)  
[www.goodfellow-japan.jp](http://www.goodfellow-japan.jp)



# MESH FOAM HONEYCOMB



These materials can offer lightweight, structural and environmentally friendly design solutions. They offer a unique combination of properties that can allow innovative new applications whilst still being familiar to work with.



## Foam -

aluminium, copper,  
ceramic, carbon



## Mesh -

copper, stainless steel,  
titanium



## Honeycomb -

aluminium, polyaramid,  
polypropylene

# WIRE FOIL SHEET

Goodfellow has a huge range of metal sheets, foils, wires and rods from common materials to the exotic. Each material is available off the shelf in lots of different sizes to meet individual needs.

**Titanium** ●

**Stainless Steel** ●

**Copper** ●

**Brass** ●

**Bronze** ●

**Aluminium** ●

**Iron** ●

**Tungsten** ●



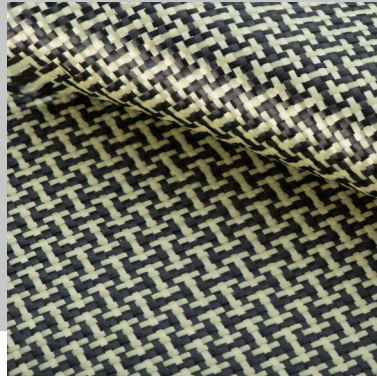
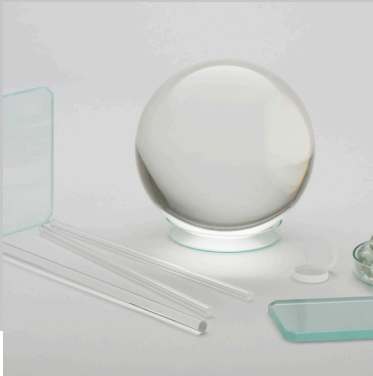
# FABRICS COMPOSITES GLASSES

Polyaramid, carb

Polye

Coloure

Goodfellow offers specialised fabrics/composites from high end materials used in body armour and high performance sailcloths to innovative, sustainable products with a low environmental impact. Standard and custom glasses are available to suit your application.





Carbon fibre  
Polyethylene  
Flax  
Fibreglass



# PRECIOUS METAL

Goodfellow has a long history of supplying the highest purity precious metals in standard and custom forms.

**Platinum**

**Gold**

**Silver**

**Iridium**

**Rhodium**

**Palladium**

# FORMS



## Bar

A straight length of rectangular, square or oval section material.

---



## Bolt

A threaded pin that can be screwed into a nut or a tapped hole to fasten items together. Bolts are available with different head styles and also in metric and inch-threaded sizes.

---



## Chopped Fibre

Fibres cut into short lengths called cut, staple or chopped fiber.

---



## Crucible

A vessel in which other materials may be heated or melted, usually at high temperatures.

---



## Foam

A low density, permeable structure of cells and continuous ligaments offering a high surface area to volume ratio, and also a high strength to weight ratio.

---



## Foil

Thin sheets of pure metal and metal alloys. Due to their fragile nature, some foils are coated on one side with an acrylic or polyester support. Where foils are supported they are indicated in the detailed item description.

---



## Fabric

Woven fabrics are made by the regular interlacing of two arrays of yarns at right angles to each other, these being referred to as the warp and weft (see also Non-woven fabric).

---



## Fibre

Yarns or tows consisting of several approximately parallel individual filaments, each filament usually being smaller in diameter than a monofilament. Yarns contain a defined number of filaments, typically three to several hundred; tows contain thousands of filaments whose number is only defined approximately. Both are primarily specified by their linear density measured in "tex", the weight in grams of a 1km length of material.

---



## Film

A non-metallic sheet material with a thickness < 0.5mm.

---



## Flake

Flat, irregularly shaped pieces of material. A maximum flake size is indicated but individual flakes may vary greatly in size.

---



## Granule

Pellets of an approximately regular shape. Granules may vary in size and, therefore, the dimensions stated are nominal. In addition, the shape of a granule may vary from item to item.

---



## Honeycomb

A cellular structure similar in appearance to natural honeycomb.

---



## Insulated Wire

A single or multiple flexible strand of metal or alloy with an insulating sheath.

---



## Laminate

Layers of material which have been bonded together by the use of heat, pressure and, possibly, adhesive.

---



## Lump

A solid piece of material with no defined shape.

---



## Mesh

Mesh is available as either a woven wire or electroformed product; in all cases, the quoted aperture sizes are nominal. Wire mesh: a material which is woven from metal wires to provide a thin grid with a regular series of holes. Electroformed mesh: a product made by electroplating the mesh geometry through a mask onto a substrate which is subsequently etched away.



## Metallised Film

Film which is coated with a metal. The thickness of the metal is measured and described in terms of the material's specific electrical resistance in ohms per square.

---



## Microfoil

An extremely thin sheet of metal or alloy mounted on a permanent support. This support **cannot** be removed without destroying the Microfoil.

---



## Microleaf

An extremely thin sheet of metal mounted on a removable support. Microleaf is not available for metals which are too brittle to be free standing.

---



## Monofilament

A single strand of a non-metallic material.

---



## Non-Woven Fabric

Non-woven fabrics are made by methods other than weaving or knitting, the yarns and fibres being held together, often quite loosely, by means other than geometric interlacing. Due to the open and porous nature of this material, all other dimensions are nominal.

---



## Nut

Generally a flat piece of material with a threaded hole which can be screwed onto a bolt to fasten items together. Nuts typically have a hexagonal external shape. Nuts are available in metric and inchthreaded sizes.

---



## Powder

Small particles with an approximately defined size range. Those materials described as alloy precursors are not true alloys - they are made by sintering a blend of powders of the component metals to achieve alloying by diffusion. The resultant cake is ground and sieved to the required particle size range. Unless otherwise stated, the particle sizes shown are for guidance only. We do not guarantee either any particular size distribution between the quoted minimum and maximum sizes, or a specific particle shape.

---



## Rod

A straight length of circular section material.

---



## Sheet

Flat material with a thickness  $>0.5\text{mm}$ .

---



## Sputtering Target

A high purity material used as a source for sputtering, a cold vaporization process in which atoms are physically removed from the target surface by ion bombardment.

---



## Single Crystal

A material grown as a monocrystal, generally to a specific orientation, dimension and surface finish. It may contain a dopant. Single crystals are usually made to order.

---



## Sphere

A regular solid or hollow three-dimensional form in which every cross-section is a circle. Spheres are available with standard or precision tolerances, and can be supplied with different surface finishes depending on the material.

---



## Tube

A hollow length of material normally circular in section. Most tubes are straight except those made of flexible polymer.

---



## Washer

A thin, flat piece of material with a hole in the middle, used in conjunction with bolts and nuts to distribute the load of a threaded fastener.

---



## Wire

A single or multiple flexible strand of pure metal or alloy.

## HEAD OFFICE

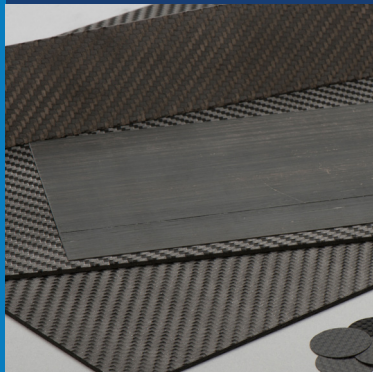
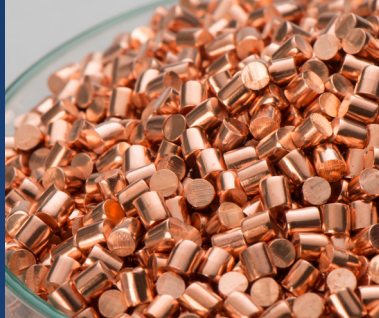
Goodfellow Cambridge Limited  
Ermine Business Park  
Huntingdon, PE29 6WR  
England

**Tel:** 0800 731 4653 (UK)  
**or** +44 1480 424 800

**Fax:** 0800 328 7689 (UK)  
**or** +44 1480 424 900

[info@goodfellow.com](mailto:info@goodfellow.com)

[www.goodfellow.com](http://www.goodfellow.com)



## USA

Goodfellow Corporation

**Tel:** 1 800 821 2870 (USA)

**Fax:** 1 800 283 2020 (USA)

[info@goodfellowusa.com](mailto:info@goodfellowusa.com)

[www.goodfellowusa.com](http://www.goodfellowusa.com)

## FRANCE

Goodfellow SARL

**Tél:** 0800 917 241 (numéro vert)

**ou** +44 1480 424 813

**Fax:** 0800 917 313 (numéro vert)

**ou** +44 1480 424 900

[france@goodfellow.com](mailto:france@goodfellow.com)

[www.goodfellow.fr](http://www.goodfellow.fr)

## GERMANY

Goodfellow GmbH

**Tel:** 0800 1000 579 (freecall)

**oder** +44 1480 424 810

**Fax:** 0800 1000 580 (freecall)

**oder** +44 1480 424 900

[info@goodfellow.com](mailto:info@goodfellow.com)

[www.goodfellow.com](http://www.goodfellow.com)

## THE PEOPLE'S REPUBLIC OF CHINA

Goodfellow (Shanghai) Trading  
Co., Ltd.

**Tel:** +86 21 6112 1560

**Fax:** +86 21 6130 4901

[china@goodfellow.com](mailto:china@goodfellow.com)

[www.goodfellow.cn](http://www.goodfellow.cn)

## JAPAN

Goodfellow Cambridge Limited  
c/o Intralink Japan

**Tel:** +81 3 5579 9285

**Fax:** +81 3 5579 9291

[info-jp@goodfellow.com](mailto:info-jp@goodfellow.com)

[www.goodfellow-japan.jp](http://www.goodfellow-japan.jp)

For representatives in other territories, please consult our website at

***Goodfellow.com***